



Break Free from the Suburbs!

Beautiful ACREAGE!

Let Your Dreams Run Free at Palomino Ridge!

Nature says, "Welcome Home!" Build a home and a lifestyle. Lose yourself in the woods, and find your peace of mind. Roam the hillsides, hide in the trees. Splash through the creek or stop and skip a rock. Nap in the tall meadow grasses. Leave the city stress behind. Trade the wild life for some wildlife. Palomino Ridge, the moment has arrived. Choose a homesite. Choose a lifestyle.

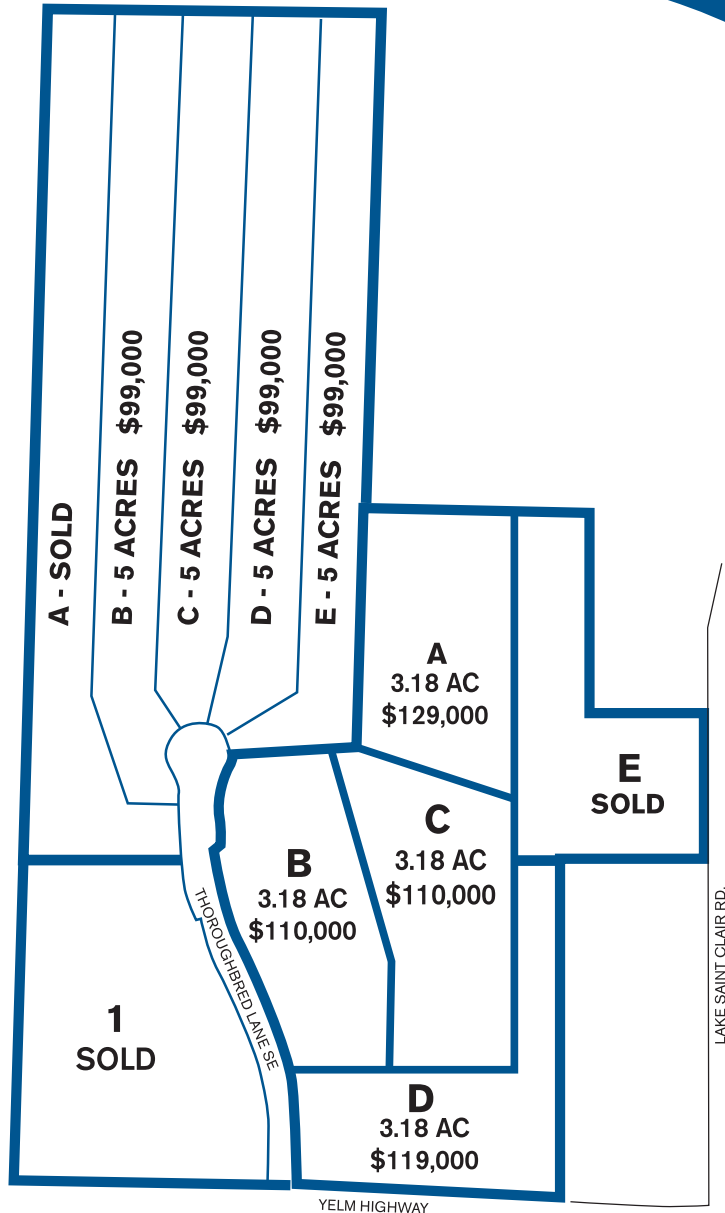
- Easy I-5 commute North and South
- Close to Ft. Lewis
- Close to town, but feels a million miles away
- Unique natural features on each lot

Priced from \$99,000 to \$129,000

DIRECTIONS

From I-5 South: Exit 116 toward Mount's Road/Old Nisqually. Left onto Nisqually Rd/Old Pacific Hwy SE for 5.6 miles. Turn Left onto St. Clair Cut-Off Road SE/WA 510. Continue to follow WA-510 for 2.9 miles. Turn right onto Yelm Hwy SE 2.4 miles. Thoroughbred Lane SE on right just past Lake St. Clair Drive SE.

From Lacey: 4.3 miles east on Yelm Hwy SE from intersection of Ruddell and Yelm Hwy SE.



DAN BARRETT

360.491.3351

dan.barrett@cbolympia.com

